

## PERFORMANCE

### Processor

Intel® Core™ i7-8565U (4C / 8T, 1.8 / 4.6GHz, 8MB)

### Graphics

Integrated Intel UHD Graphics

### Chipset

Intel SoC Platform

### Memory

8GB Soldered DDR4-2400 + 8GB SO-DIMM DDR4-2400

### Memory Slots

One memory soldered to systemboard, one DDR4 SO-DIMM slot, dual-channel capable

### Max Memory

Up to 40GB (8GB soldered + 32GB SO-DIMM) DDR4-2400

### Storage

1TB SSD M.2 2280 PCIe 3.0x4 NVMe Opal2

### Storage Support

One drive, up to 128GB M.2 2242 SSD or 2TB M.2 2280 SSD, optional Intel Optane™ Memory integrated with SSD, M.2

### Card Reader

MicroSD Reader

### Optical

None

### Audio Chip

High Definition (HD) Audio, Realtek® ALC3287 codec

### Speakers

Stereo speakers, 2W x2, Dolby® Audio™ Premium

### Camera

720p + IR with ThinkShutter

### Microphone

2x, Array

### Battery

Integrated 57Wh

### Max Battery Life

MobileMark® 2014: 14.98 hr

### Power Adapter

65W USB-C

## DESIGN

### Display

15.6" FHD (1920x1080) IPS 250nits Anti-glare

### Touchscreen

None

### Keyboard

Backlit, English (EU)

### Case Color

Black

### Case Material

PPS / 50% GF (Top), PA / 50% GF (Bottom)

### Dimensions (WxDxH)

365.8 x 248 x 19.1 mm (14.40 x 9.76 x 0.75 inches)

### Weight

1.81 kg (3.99 lbs)

## SOFTWARE

### Operating System

Windows® 10 Pro 64, Romanian / English

### Bundled Software

None

## CONNECTIVITY

### Ethernet

100/1000M

### WLAN + Bluetooth™

Intel 9560 11ac, 2x2 + BT5.1

### WWAN

Fibocom L830-EB

### SIM Card

None

### NFC

None

### Standard Ports

- 1x side docking connector
- 1x USB-C 3.1 Gen 2 / Thunderbolt™ 3 (support data transfer, Power Delivery and DisplayPort™ 1.2)
- 1x Ethernet (RJ-45)
- 1x USB 3.1 Gen 1 (Always On)
- 1x HDMI® 1.4b
- 1x headphone / microphone combo jack (3.5mm)
- 1x microSD card reader
- 1x USB 3.1 Gen 1
- 1x USB-C 3.1 Gen 1 (support data transfer, Power Delivery and DisplayPort 1.2)

### Optional Ports (configured)

- 1x Smart card reader
- 1x Nano-SIM card slot (WWAN models)

### Monitor Cable

None

## SECURITY & PRIVACY

### Smart Card Reader

Smart Card Reader

### Security Chip

Discrete TPM 2.0

### Fingerprint Reader

Touch Style, Match-on-Chip

### Physical Locks

Kensington® Security Slot

### Other Security

- IR camera for Windows® Hello
- ThinkShutter camera cover

## MANAGEABILITY

### System Management

None

## SERVICE

### Base Warranty

3-year, Depot

### Included Upgrade

None

## ACCESSORIES

### Bundled Accessories

None

## CERTIFICATIONS

### Green Certifications

- ENERGY STAR® 8.0
- TCO
- EPEAT™ Gold
- RoHS compliant

### Mil-Spec Test

MIL-STD-810G military test passed

## MODEL

TopSeller : Yes

Announce Date : 2019-06-04

EAN / UPC / JAN : 0193386578963

End of Support : 2025-10-15

· Product image on this page is a sample, it may not match the real color of this model

· Battery life is an estimated maximum. Actual battery life may vary based on many factors, including screen brightness, active applications, features, power management settings, battery age and conditioning, and other customer preferences

## Premier Support - A direct 24x7x365 line to our most elite technicians.



Advanced technical support, 24x7x365, in more than 100 markets



Technical Account Managers for proactive relationship and escalation management



Comprehensive hardware & OEM software support



Priority on service delivery and repair parts



Single point of contact for simplified end-to-end case management



Lenovo Service Connect Portal for customized reporting and product support

## Accidental Damage Protection - Protection of your PC from the unexpected.

Experience shows that a significant portion of devices may be damaged (and not covered under warranty) in the first three years. Lenovo's Accidental Damage Protection service covers accidents beyond the system warranty such as drops, spills, bumps and even electrical surges. Make sure your new device has maximum protection, avoid unplanned costs and get peace of mind.

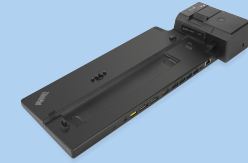
## Base Warranty - Included with the systems you purchase, default 1- or 3-year coverage window.

## Warranty Extensions & Upgrades - Service and protection that's right for your circumstances.

- Pick Up & Return Courier
- Onsite Support
- Technician Installed Customer
- Replaceable Unit Service
- International Warranty Upgrade

Lenovo may not offer the products, services or features discussed in this document in all regions. Lenovo may withdraw an offering at any time. Information is subject to change without notice. Consult your local representative for information on offerings available in your area. Lenovo reserves the right to change specifications or other product information without notice. Lenovo is not responsible for photographic or typographical errors. Lenovo provides this publication "as is" without warranty of any kind, either express or implied, including the implied warranties of merchantability or fitness for a particular purpose.

## Recommended Accessories



### ThinkPad Ultra Docking Station (American Standard Plug)

40AJ0135US

The ThinkPad Ultra Docking Station provides the best docking experience for large enterprise ThinkPad customers. The innovative side connector, designed exclusively for ThinkPad notebooks, provides a driver-free way t...

## Recommended Services

BEST	5Y Premier Support Upgrade from 3Y Courier/Carry-in (5WS0T36204)
BETTER	4Y Premier Support Upgrade from 3Y Courier/Carry-in (5WS0T36185)
GOOD	3Y Premier Support Upgrade from 3Y Courier/Carry-in (5WS0T36152)

For a full list of accessories and services, please visit: <https://smartfind.Lenovo.com>



**PSREF**  
Product Specifications  
Reference